



Remote Order Capture Program for Sales Representatives

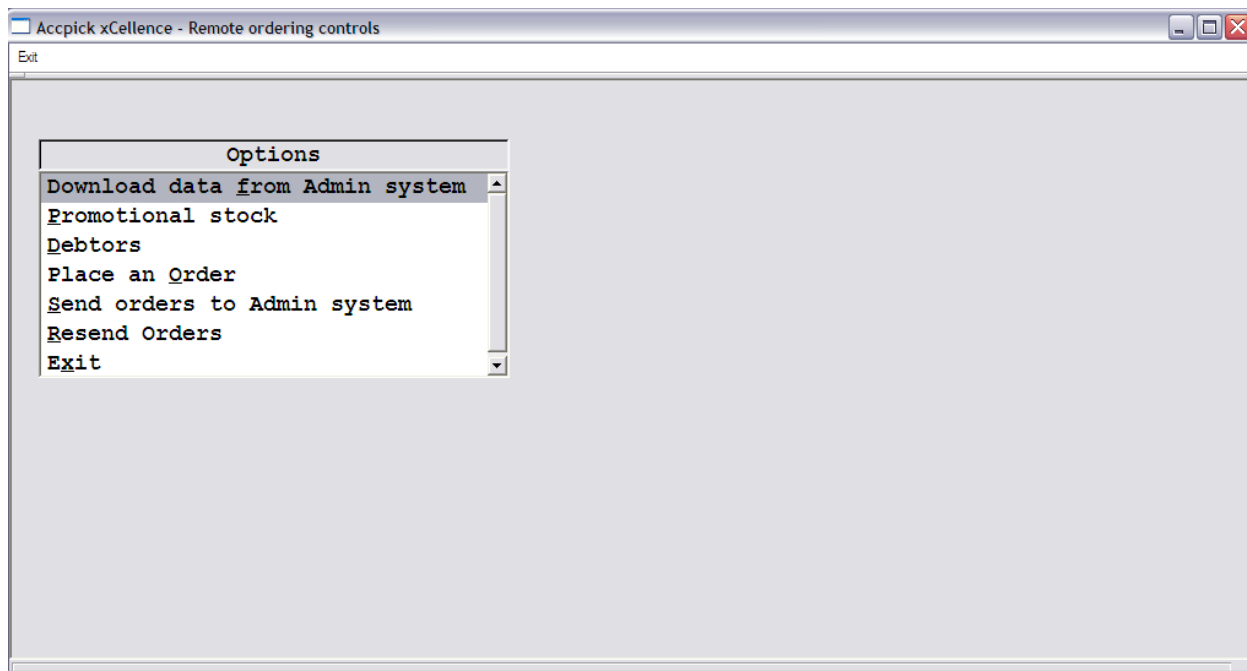
Contents

Remote Order Capture Program Overview	3
Connecting to the Internet using the 3G Connection	4
Download Data from Head Office	6
To View and Print Stock on Promotion	8
To View Debtors' Information	9
To Capture an Order	11
To Send an Order to Head Office	14
To Resend Orders to Head Office	15

Remote Order Capture Program Overview

This program is for the Sales Representative to capture orders onto their computers for Debtors, whilst in the field. Orders that are captured are then sent via an in built 3G Internet connection to the Head Office server.

The Order Capture program has the following options:



Download data from Admin system: Will collect the latest data for Debtors and Stock information from the Head Office server, and needs to be done during office hours / whilst the Head Office server is switched on. The data that is viewed via the promotional stock, stock and debtors options are as up to date as the last download from head office.

Promotional Stock: Shows items that are on promotion with an option to print.

Debtors: Shows Debtors Age Analysis and contact details.

Place an order: Allows an order to be captured and saved.

Send orders to Admin system: This will send orders to the Head Office for processing.

Resend Orders: This allows orders to resend orders. Orders are automatically deleted when they are 7 days old.

Connecting to the Internet using the 3G Connection

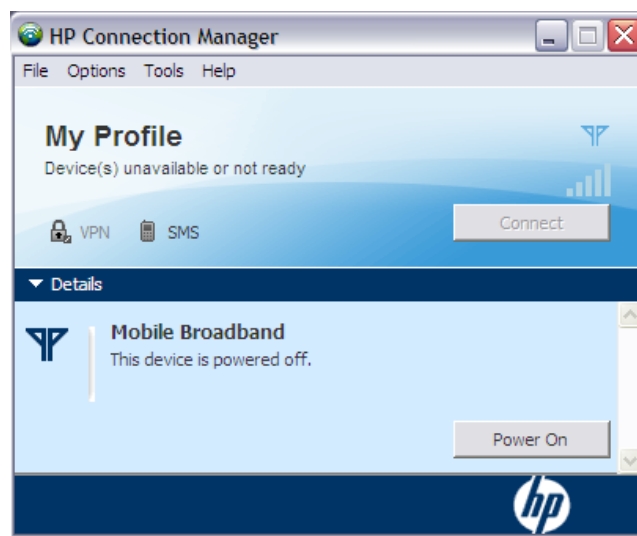
This needs to be done before a download of data can be done and before an order can be sent to the Head Office Server.

To connect the 3G connection:

1. Double click on the HP Connection Manager icon on the desktop.



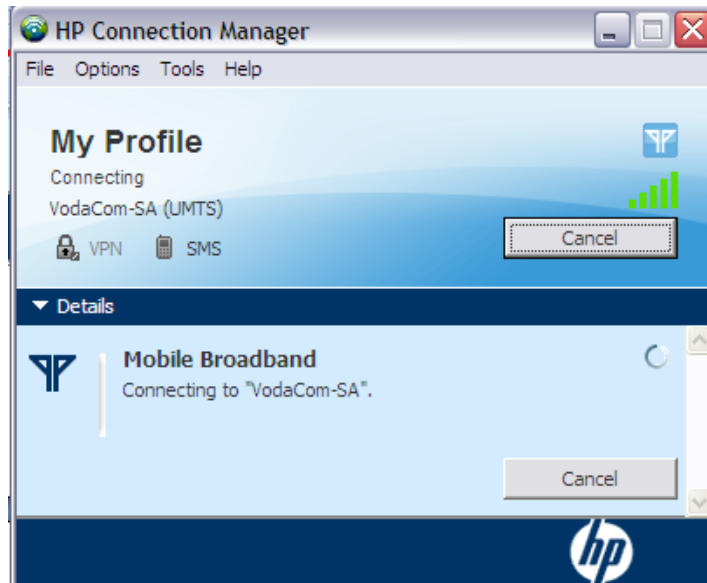
2. If the Connect button is disabled, click on the Power On button to power up the device.



3. Click on the Connect button.



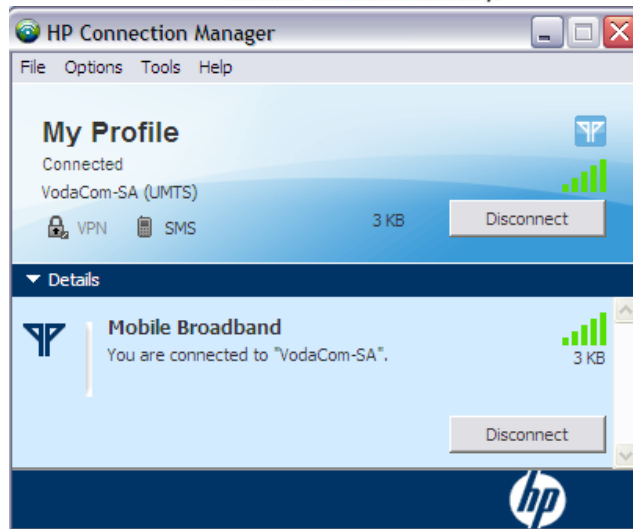
4. The device will then attempt to connect:



5. Once connected, the screen will look like:



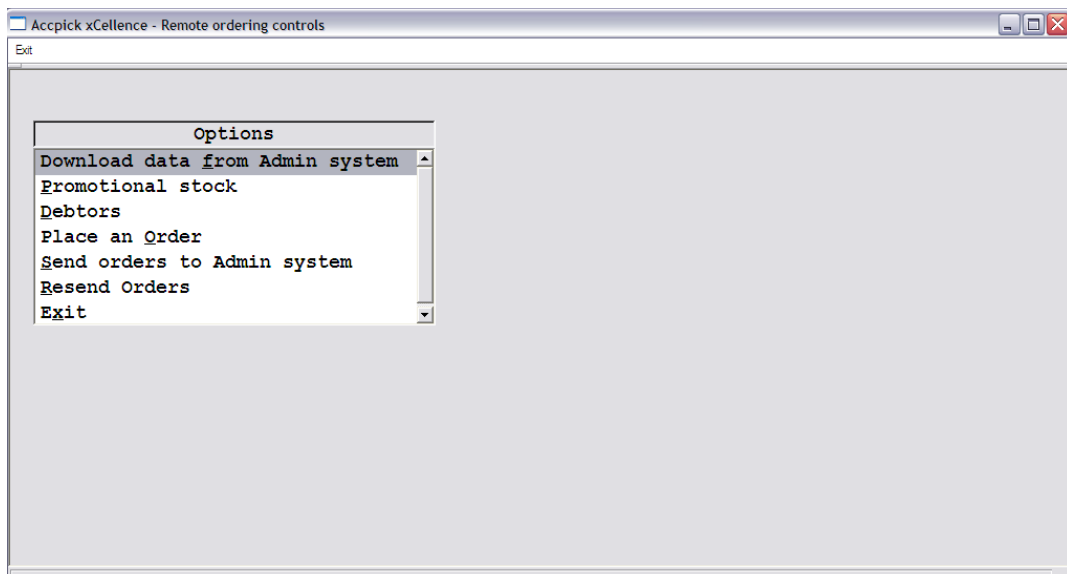
6. Click on Disconnect to close the session. Once disconnected, your screen will look like this:



Download Data from Head Office

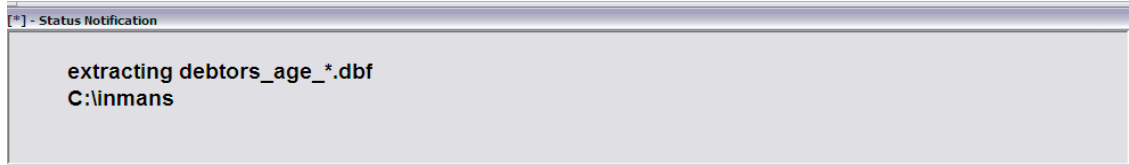
*** Before running this procedure, ensure that your Internet connection is available by following the steps under the section: "**Connecting to the Internet using the 3G Connection**". ***

Click on the 'Download data from Admin system' option from the menu:



Progress screens will display the download and extraction of data:

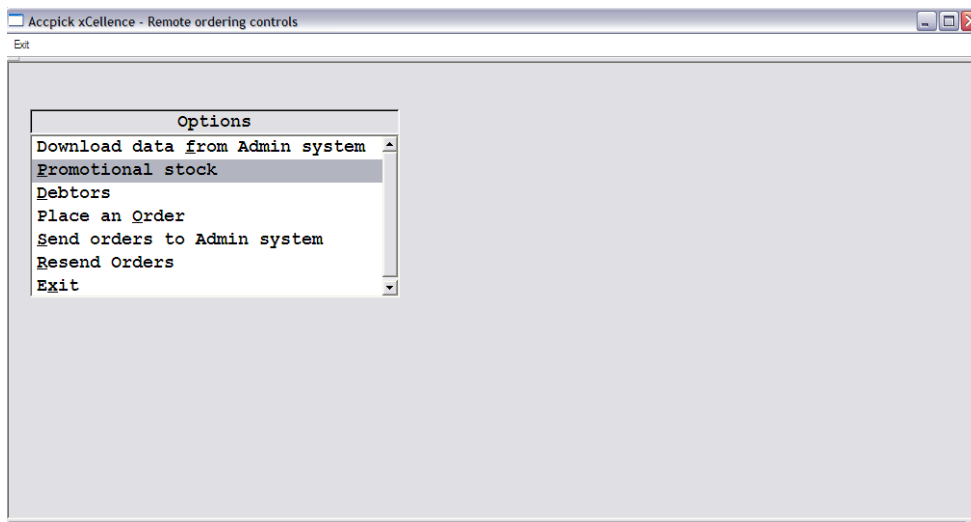




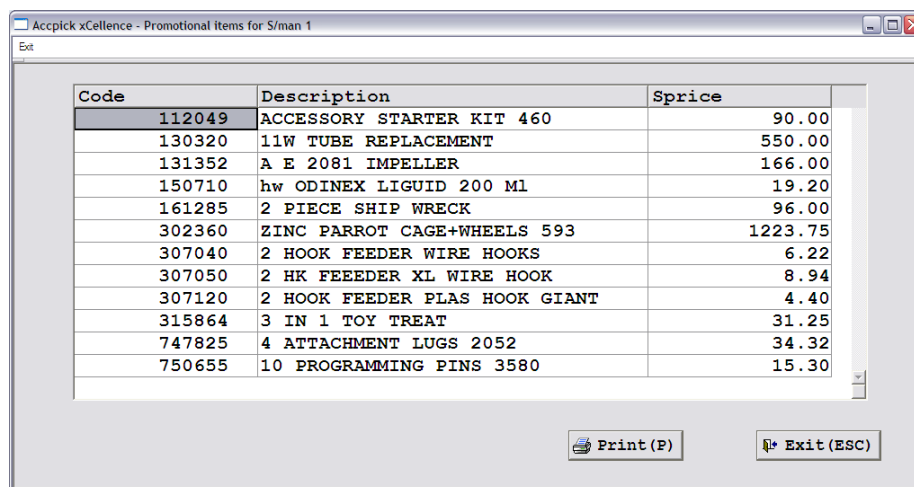
Once this screen has gone away, the data has been downloaded and the system is up to date and ready to process orders.

To View and Print Stock on Promotion

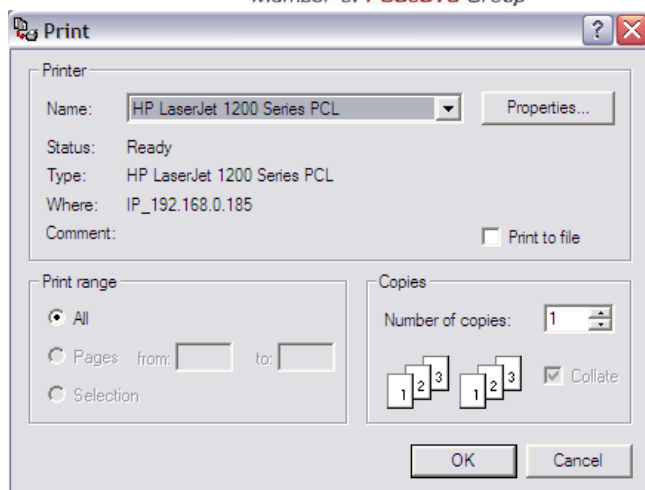
Click on the Promotional Stock option:



This option shows all the stock items on promotion and their selling prices with an option to print:

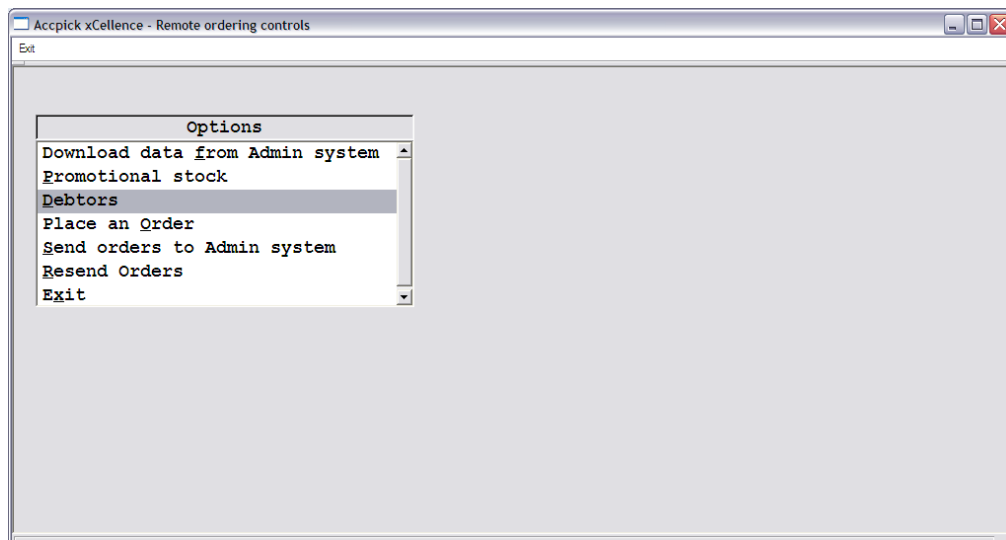


When clicking on Print, you will need to select a printer to print to. Only printers installed on the Netbook will be available as an option:



To View Debtors' Information

This option will display the Debtors list with their aging and contact details.



The screen below shows the Debtor aging for Current to 90 days:

[*] - Debtor lookup

Account No	Name	Current	D30
860	AGRICULTURAL HARDWARE	1.44	0.
759	NOAHS ARK - PMB	2523.93	0.
338	PETS INC	551.47	0.
841	PETS WORLD & AQUATICS-PMB	12835.61	0.
36	PIC A PET - ACC 2	0.00	0.
34	PIC-A-PET - PMB	1067.06	0.
733	RAMSONS	1510.94	0.
892	SNAZI PETS	0.00	0.
4	WHOLESALE	153.98	154.
328	YOUR PET SHOP	0.00	0.

Pressing the + key will display Contact and Addressing details for the selected Debtor:

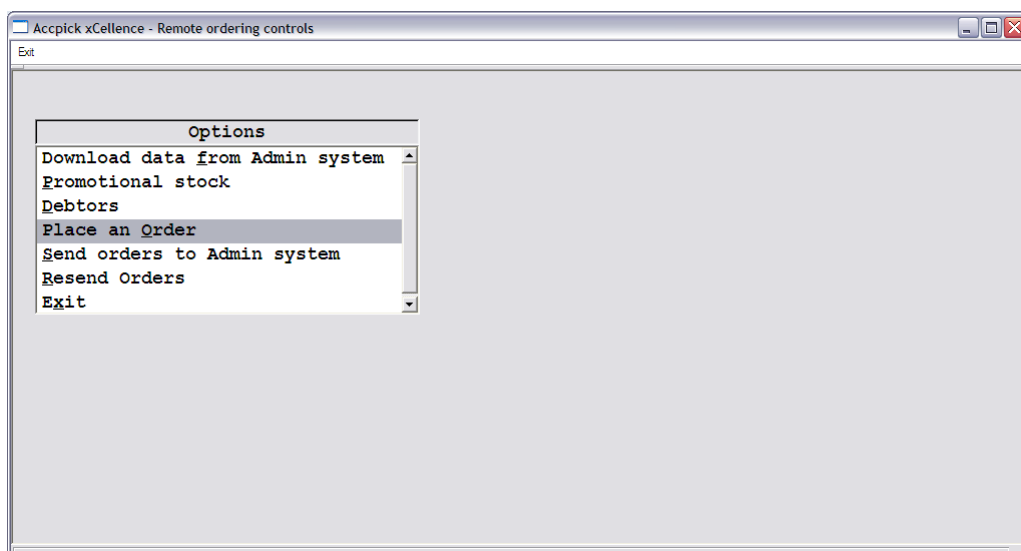
[*] - AGRICULTURAL HARDWARE

Delivery Details : 215 GREYLING STR
 PIETERMARITZBURG

Contact Person : JAN DE GOEDE
 Tel : 033-394 20 Tel2 : 082 877 04
 Fax : KAREN
 Email :

To Capture an Order

Choose the Place an Order option:

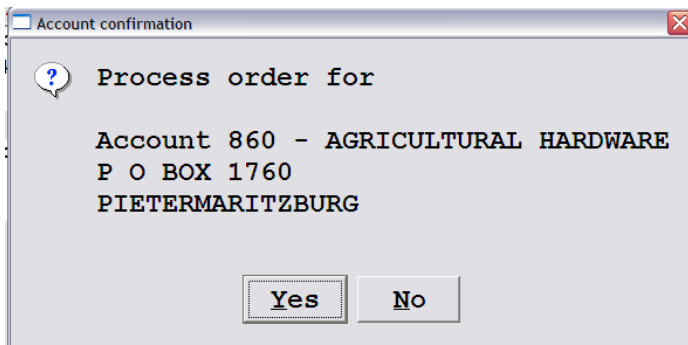


Select the Debtor who the order is for:

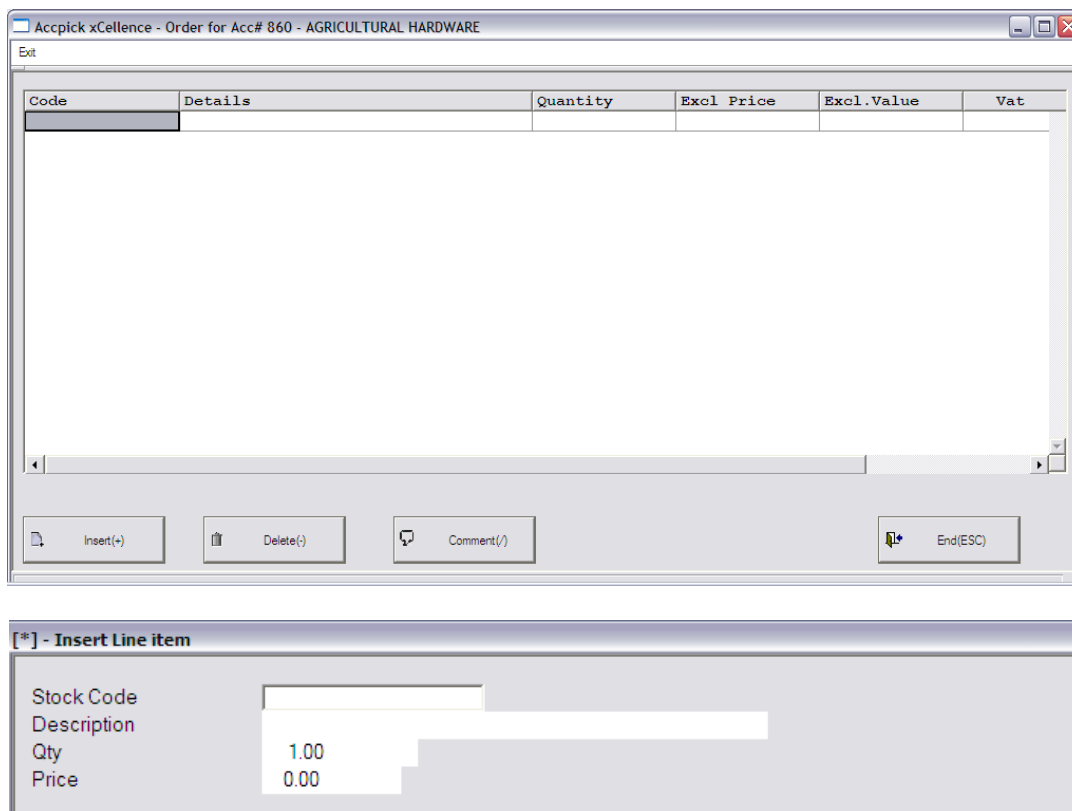
[*] - Debtor lookup

Account No	Name	Current	D30
860	AGRICULTURAL HARDWARE	1.44	0.
759	NOAHS ARK - PMB	2523.93	0.
338	PETS INC	551.47	0.
841	PETS WORLD & AQUATICS-PMB	12835.61	0.
36	PIC A PET - ACC 2	0.00	0.
34	PIC-A-PET - PMB	1067.06	0.
733	RAMSONS	1510.94	0.
892	SNAZI PETS	0.00	0.
4	WHOLESALE	153.98	154.
328	YOUR PET SHOP	0.00	0.

Confirmation will be required before the order can be processed:



Enter items for the order by pressing the + key or clicking on the Insert button:



You can look for stock through a stock lookup screen:

[*] - Stock item search

Code	Description	Excl.Price	Excl.Price1	Excl.P:▲
750655	10 PROGRAMMING PINS 3580	15.30	12.25	3
130320	11W TUBE REPLACEMENT	0.00	0.00	(
307050	2 HK FEEDER 1/2 WIRE HOOK	8.94	7.15	2
307120	2 HOOK FEEDER PLAS HOOK GIANT	4.40	4.18	1
307020	2 HOOK FEEDER PLAS HOOK+PERCH	1.32	1.27	(
307130	2 HOOK FEEDER WIRE HOOK GIANT	12.44	9.95	3
307040	2 HOOK FEEDER WIRE HOOKS	6.22	4.95	1
320340	2 IN 1 SWING WITH TURNING BEAD	7.15	5.72	2
161285	2 PIECE SHIP WRECK	96.00	76.80	38
315080	2-IN-1 MINERAL CUTTLEFISH 13CM	8.13	6.50	2
307010	2/HOOK FEEDER PLAS HOOK S	1.72	1.38	(
315864	3 IN 1 TOY TREAT	31.25	25.00	12
742020	3 PUMP BLADES 1008/10/12	9.42	7.54	1
224423	3PCE DOG-CHEW BONES	5.88	4.70	2

Press the ESC button or click on End to save the order:

Code	Details	Quantity	Excl Price	Excl.Value
750655	10 PROGRAMMING PINS 3580	1	15.30	15.
	Total	1		15.

Update options

? Save this order

Certain information can be entered for that order:

[*] - Order details

Date required	26/03/2010
Time required	12:42
Customer Ref	
Order number	
Collect / Deliver	D
Add.Information 1	
Add.Information 2	

You will receive confirmation that the order has been saved:

Order saved!

Order for

Account 860 - AGRICULTURAL HARDWARE

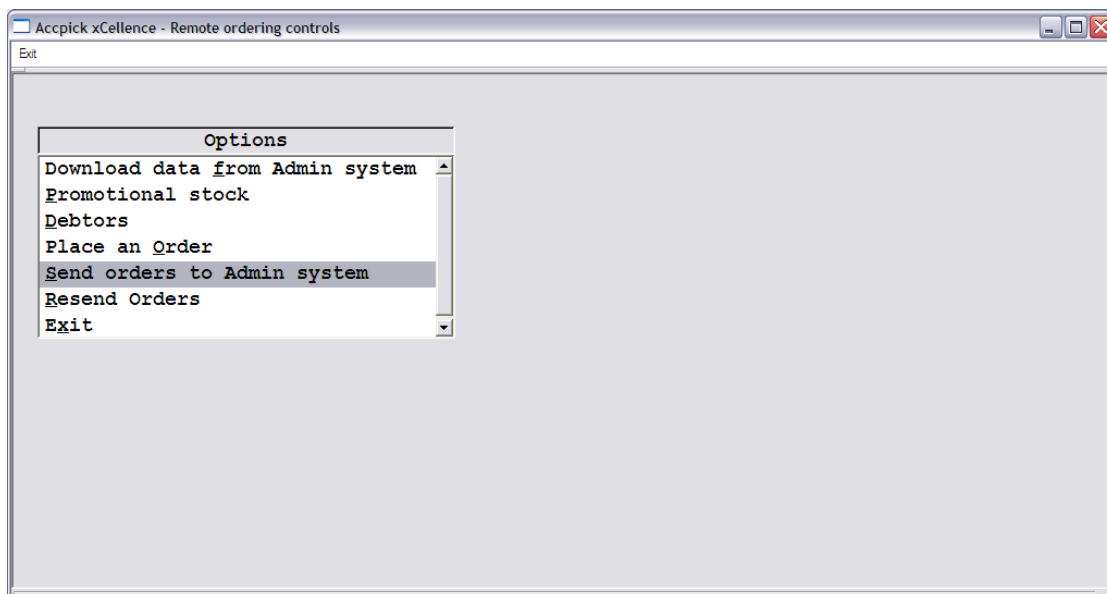
Has been saved and is ready for transmission to Admin system

To Send an Order to Head Office

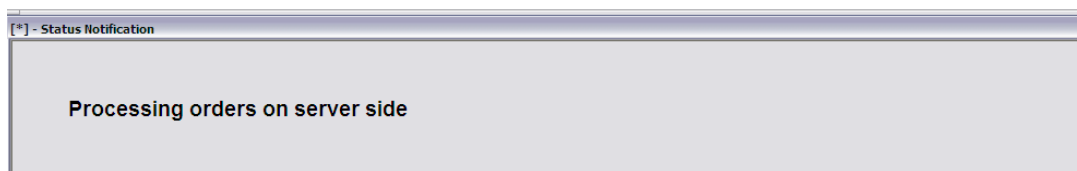
*** Before running this procedure, ensure that your Internet connection is available by following the steps under the section: "**Connecting to the Internet using the 3G Connection**". ***

All saved orders will need to be sent to head office for processing. The Internet connection will need to be active before the orders can be sent.

Choose the Send Order to Admin System option:



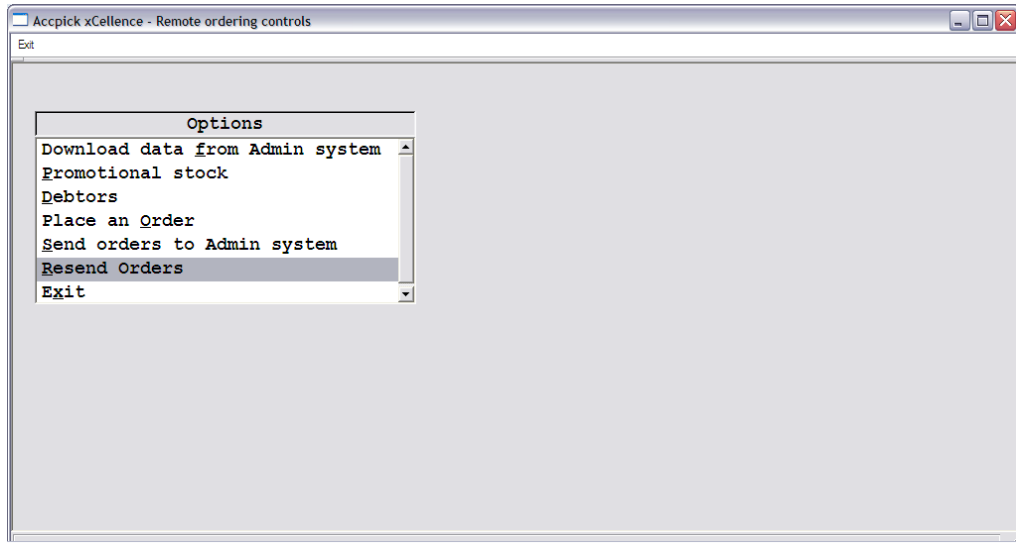
A progress bar will display the progress of the send:



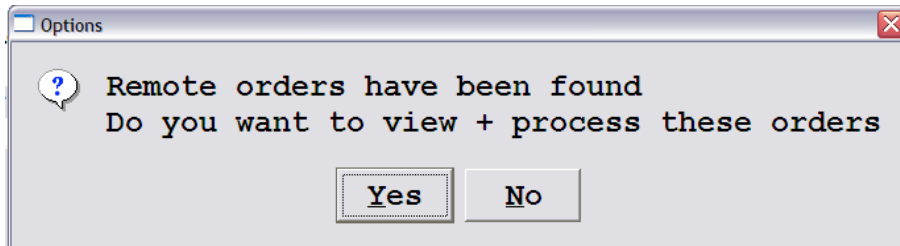
Once the progress bar has gone, the order has been sent.

To Resend Orders to Head Office

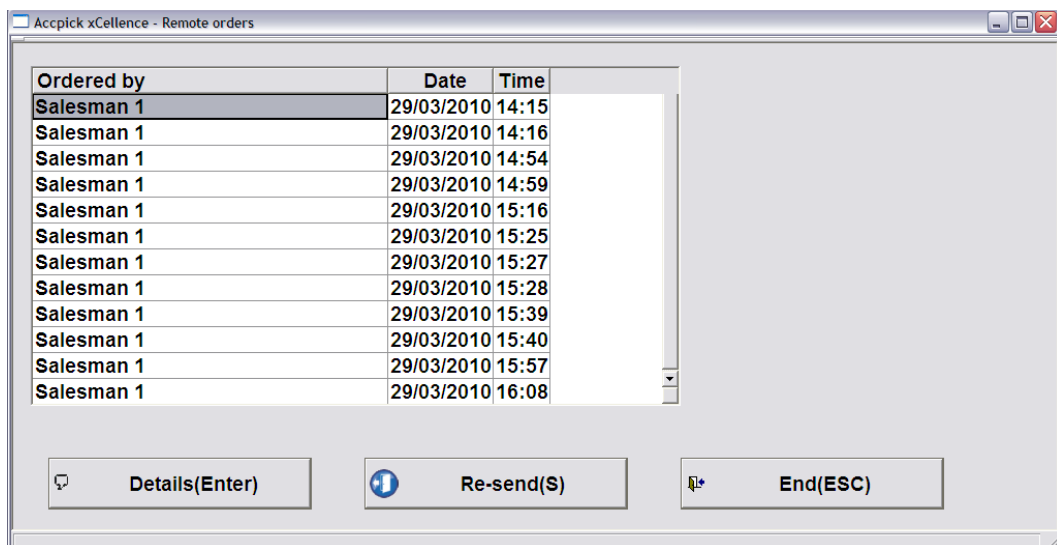
*** Before running this procedure, ensure that your Internet connection is available by following the steps under the section: "**Connecting to the Internet using the 3G Connection**". ***



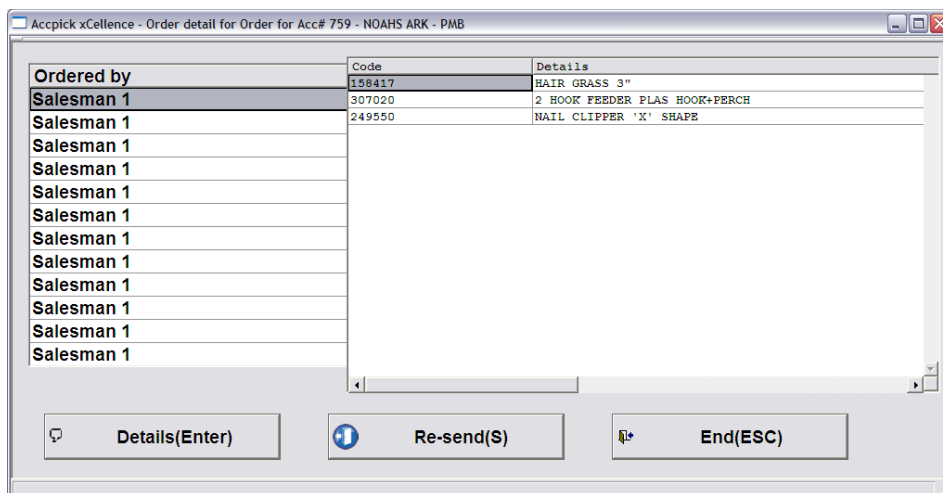
When selecting this option, a confirmation box prompt to confirm a resend, if any orders are found on the Netbook:



A list of available orders that can be sent is displayed:



Click on the Details button to view the details of the highlighted order:



The Resend button will send the highlighted order to the head office server:

